



LONDON ROCK
SUPPLIES LTD

RECYCLING FACILITY

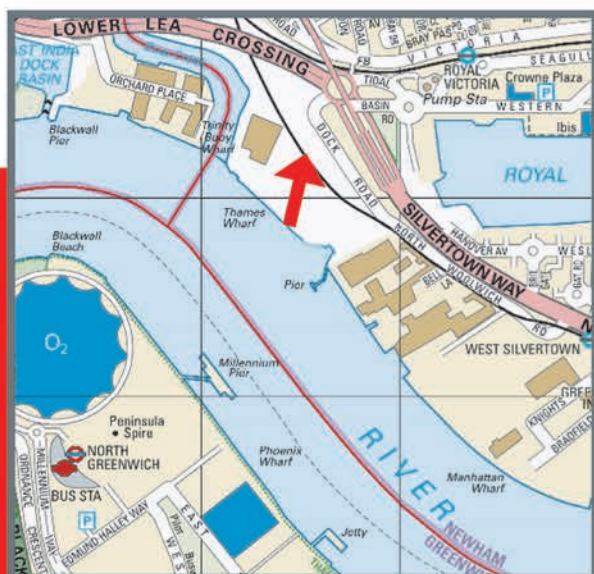


Site Address:
Unit 1 Thames Wharf
Dock Road
London
E16 1AF

Opening Times:
Mon-Fri: 7:00 - 17:30
Sat: 8:00 - 12:30

*Tippers *Grabs *Muck Away *Haulage
*Screened Topsoil *Rubbish Away

For All Your Recycled Crushed Concrete Requirements



In Collaboration with McGee Bedrock- London Rock are now the SOLE DISTRIBUTOR of all WRAP Approved Recycled Materials out of the Dock Road Recycling Facility and overseeing all Concrete imports

This new division expands the important recycling arm of both McGee Group and London Rock and further cements their commitment to responsive recycling solutions. As innovators in this field, the McGee Group has been recycling waste from their construction and demolition projects for more than 30 years. Whatever the market conditions London Rock and McGee Group can guarantee removal of concrete and hardcore from London sites quickly and efficiently, in addition to supplying recycled material.

- Prime East London Location
- 5 Miles from City of London
- 2.5 Miles from North Circular
- Clean concrete disposal
- Fully licensed recycling facility
- Concrete/Hardcore mixed load

TEL: 0208 207 5566

LONDON ROCK
GROUP

ELSTREE BUSINESS CENTRE, ELSTREE WAY,
BOREHAMWOOD, HERTFORDSHIRE, WD6 1RX



TEL. (0208) 207 5566
FAX. (0208) 207 5588



Common Construction European Waste Codes

LONDON ROCK
SUPPLIES LTD



ELSTREE BUSINESS CENTRE, ELSTREE WAY,
BOREHAMWOOD, HERTFORDSHIRE, WD6 1RX

TEL. (0208) 207 5566
FAX. (0208) 207 5588
EMAIL: info@londonrock.co.uk

McGEE

European Waste Catalogue (2001/118/EC as amended)

- 17 CONSTRUCTION AND DEMOLITION WASTES: Including excavated soil from contaminated sites
- 17 01 Concrete, bricks, tiles and ceramics
 - 17 01 01 Concrete
 - 17 01 02 Bricks
 - 17 01 03 Tiles and ceramics
 - 17 01 06* Mixtures of, or separate fractions of concrete, bricks, tiles and ceramics containing dangerous substances
 - 17 01 07 Mixtures of concrete, bricks, tiles and ceramics other than those mentioned in 17 01 06
- 17 02 Wood, glass and plastic
 - 17 02 01 Wood
 - 17 02 02 Glass
 - 17 02 04* Glass, plastic and wood containing or contaminated with dangerous substances
- 17 03 Bituminous mixtures, coal tar and tarred products
 - 17 03 01* Bituminous mixtures containing coal tar
 - 17 03 02 Bituminous mixtures other than those mentioned in 17 03 01
 - 17 03 03* Coal tar and tarred products
- 17 04 Mixed metals
 - 17 04 07 Mixed metals
 - 17 04 09* Metal waste contaminated with dangerous substances
 - 17 04 10* Cables containing oil, coal tar and other dangerous substances
 - 17 04 11 Cables other than those mentioned in 17 04 10
- 17 05 Soil (including excavated soil from contaminated sites), stones and dredging spoil
 - 17 05 03* Soil and stones containing dangerous substances
 - 17 05 04 Soil and stones other than those mentioned in 17 05 03
 - 17 05 05* Dredging spoil containing dangerous substances
 - 17 05 06 Dredging spoil other than those mentioned in 17 05 05
 - 17 05 07* Track ballast containing dangerous substances
 - 17 05 08 Track ballast other than those mentioned in 17 05 07
- 17 06 Insulation materials and asbestos-containing construction materials
 - 17 06 01* Insulation materials containing asbestos
 - 17 06 03* Other insulation materials consisting of or containing dangerous substances
 - 17 06 04 Insulation materials other than those mentioned in 17 06 01 and 17 06 03
 - 17 06 05* Construction materials containing asbestos
- 17 08 Gypsum-based construction material
 - 17 08 01* Gypsum-based construction materials contaminated with dangerous substances
 - 17 08 02 Gypsum-based construction materials other than those mentioned in 17 08 01
- 17 09 Other construction and demolition wastes
 - 17 09 01* Construction and demolition wastes containing mercury
 - 17 09 02* Construction and demolition wastes containing PCB (for example PCB-containing sealants, PCB-containing resin-based floorings, PCB-containing sealed glazing units, PCB-containing capacitors)
 - 17 09 03* Other construction and demolition wastes (including mixed wastes) containing dangerous substances
 - 17 09 04 Mixed construction and demolition wastes other than those mentioned in 17 09 01, 17 09 02 and 17 09 03

Tel: 0208 207 5566